

QUEEN LIGHT PRESENTS

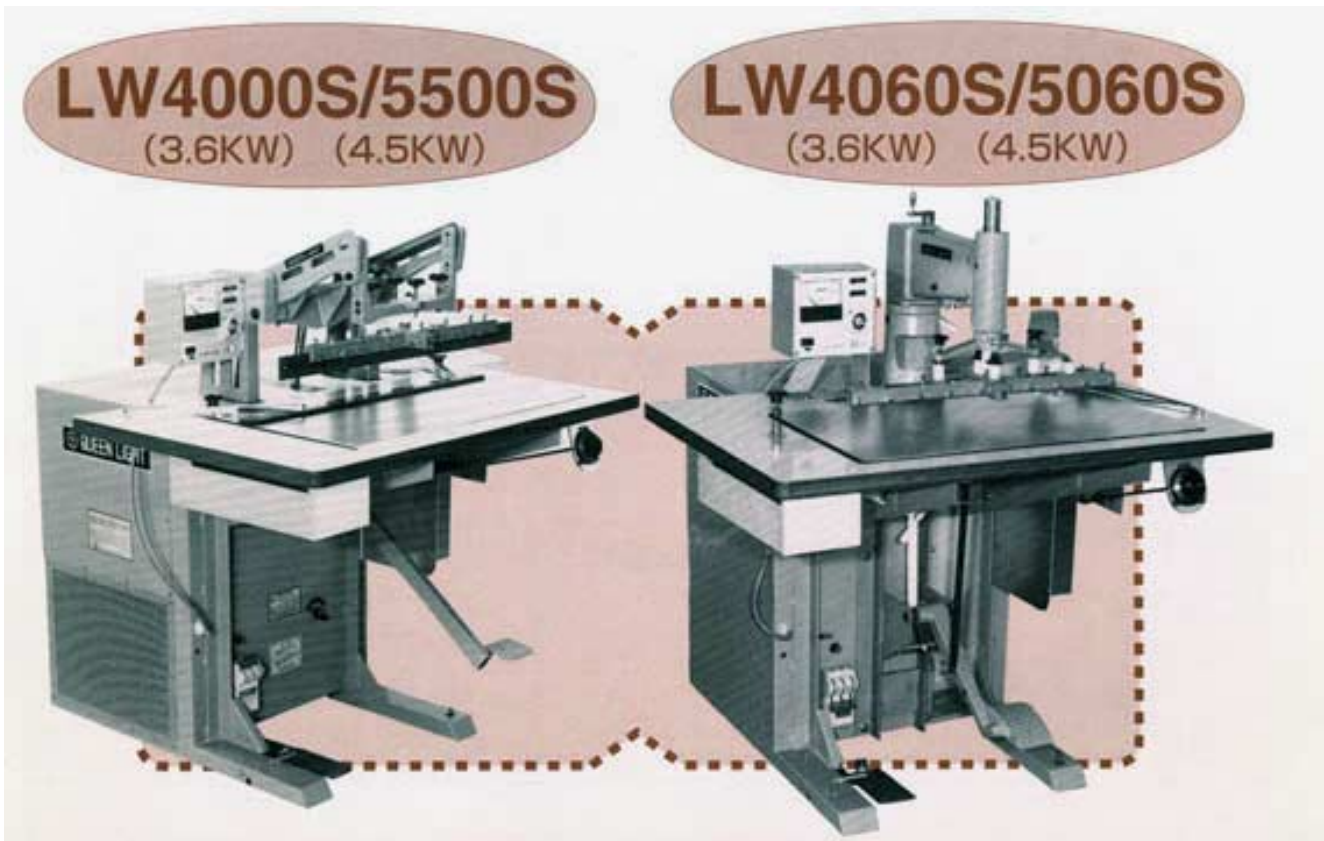
High efficiency welding machine

Single press type

Model LW4000S (3.6KW) / LW 5500S(4.5KW)
LW 4060S (3.6KW) / LW 5060S (4.5KW)

LW4000S/5500S
(3.6KW) (4.5KW)

LW4060S/5060S
(3.6KW) (4.5KW)

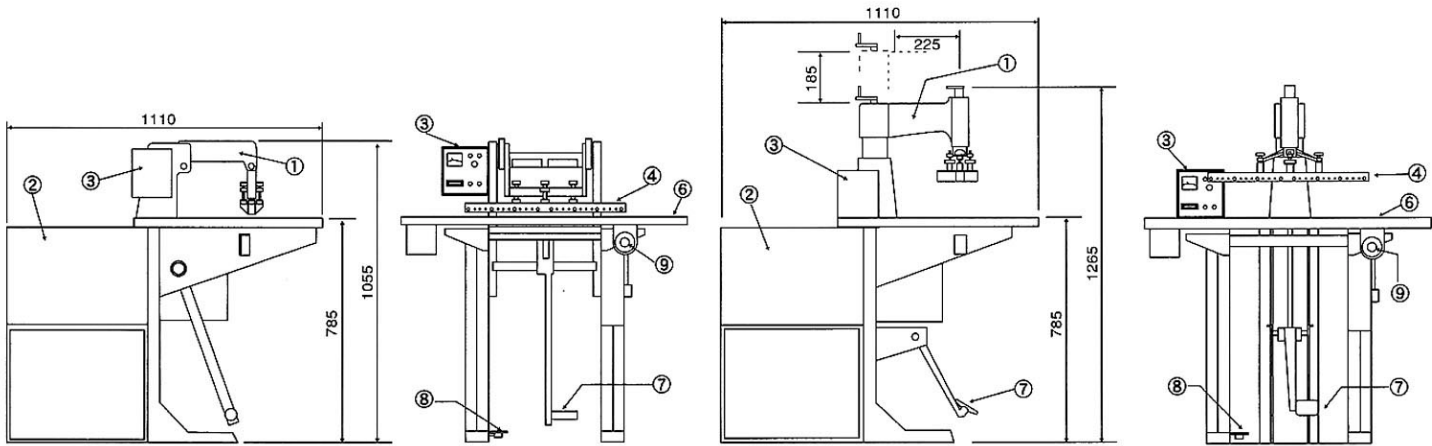


QUEEN LIGHT is delivering products of full of idea ever since company founded has developed a compact single manual press type model general purpose welding machine on this occasion which is minimum in required installation space.

Convenient to use for all types of work and entirely free of troubles, because of no complicated HF electrode is necessary.

FEATURES

- **Powerful pressure**
LW 4000S(5500S) has a toggle system of which is most simple system but of powerful pressure enabling beautiful finish with ease.
- **Precision vertical spindle press**
LW 4060S(5060S) has a precision "C" type press of which vertical spindle is finished by precision grinding, furthermore the "C" type press makes it ideal for the welding of bulky goods, In addition as arm type platen is provided making it possible to weld blow molded products.
All the machines are equipped with simple and entirely trouble-free oscillator and press mechanism.
- **Maximized range of press stroke**
The distance between upper and lower electrode can be adjusted in wide range, special height mold can be used.
- **Optional devices**
1. Automatic press system. 2. Heater built-in type upper electrode. 3. Spark prevention system of class "A".
4. Automatic electrode turnabout system is also provided in option.



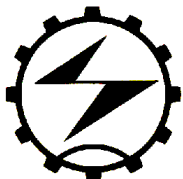
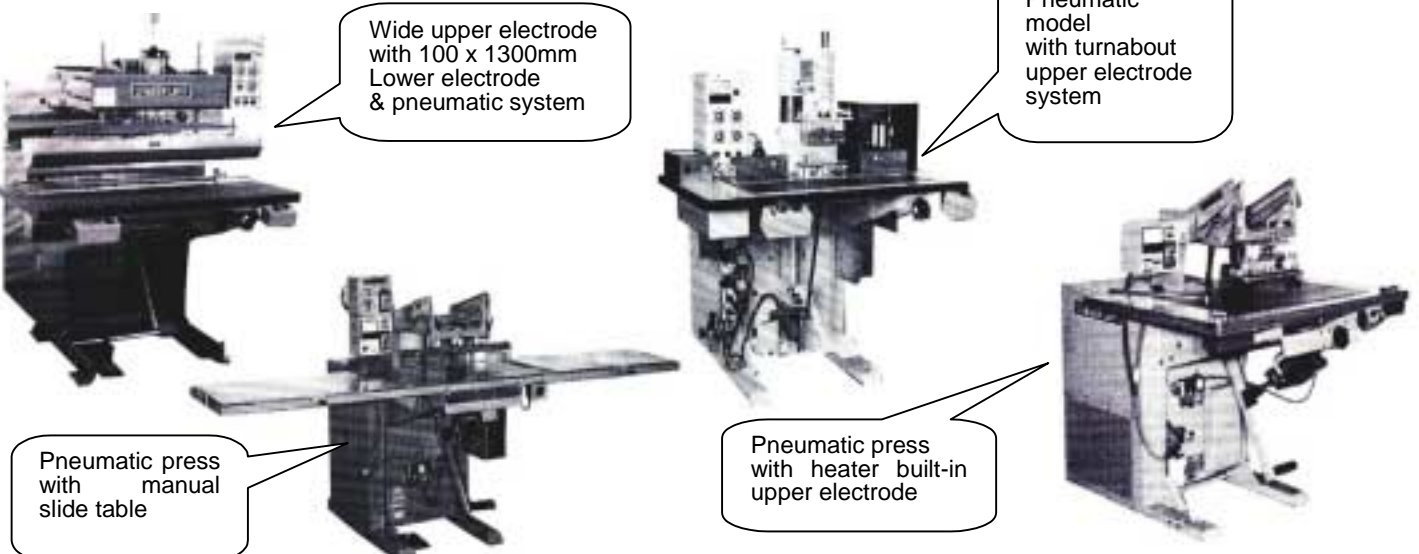
① Press	② Oscillator	③ Control box	④ Upper electrode	⑤ Guide stopper
⑥ Table	⑦ Press pedal	⑧ Oscillation switch	⑨ Tuning dial	

SPECIFICATIONS

Oscillator	3.6KW	4.5KW	Model	LW4000S	LW5500S	LW 4060S	LW 5060S
Power source	3P / 200-220V 50/60Hz		Working depth	Abt. 240 mm		Abt. 225 mm	
Power consumption	5.8 KVA	9 KVA	Press stroke	100 mm		50 mm	
Power output	3.6 KW	4.5 KW	Lower electrode	400 x 700 mm			
Frequency	40.46 +- 240Khz		Upper electrode	Straight bar holder type (Heater built-in type available on option)			
Oscillation system	Coaxial resonance self-oscillation		Work height	Abt. 785 mm			
Oscillating tube			Pressure system	Foot pedal with toggle mechanism		Direct foot pedal system	
Rectification system	Silicon diode all wave rectification		Size	W1000xD1110xH1200mm		W1000xD1110xH1300 mm	
Safety device	Over-lord shut-off circuit Spark detection system		Weight	Abt. 200Kg	Abt. 220Kg	Abt. 210Kg	Abt. 230Kg

*Subjects may be changed without notes, Confirm is necessary in prior.

Samples from the list of various models



Manufactured by
QUEEN LIGHT ELECTRONIC INDUSTRIES LIMITED

576-1 Minato, Wakayama, Japan 640-8404
 Phone 8173-431-6245
 Fax 8173-433-8815
 E-Mail: info@queenlight.co.jp
 Web site: www.queenlight.co.jp